

Product Description

Akona® Commercial Grade Concrete Repair is a commercial grade crack filler and sealer for repairs to vertical and horizontal concrete, masonry, stone and stucco surfaces. The product is gray in color and designed to blend in with the texture of concrete surfaces. Pre-Mixed Concrete Repair is a sanded acrylic formulation that is fast drying, paintable and remains flexible.

When/Where to Use

- Interior & exterior repairs
- Fills concrete cracks
- Horizontal & vertical repairs
- On concrete surfaces

Advantages

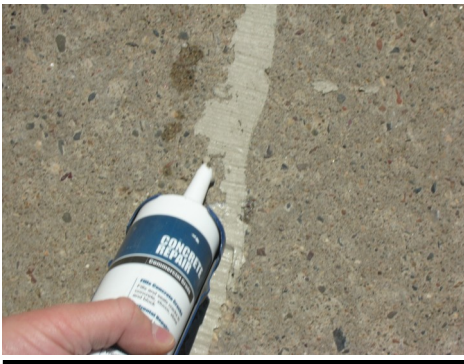
- Ready to use
- Superior adhesion
- Durable & flexible

Available Sizes:

10 FL. Oz. (296 mL) tube

Coverage

24 linear feet (7.3 M) at 1/4" (6 mm) joint.



Helpful Items:



Preparation:

Remove all loose or unsound materials. Thoroughly clean surface of dirt, dust, grease or other contaminants before using concrete repair. Be sure to remove all loose chips or stones from the crack prior to using Akona® **Commercial Grade Concrete Repair**. Apply to dry surfaces only for best bonding.

Application

- Trim cartridge to desired bead size. Use cartridge in standard caulking gun.
- Use in joints of maximum width and depth of 3/8" (10 mm). Deep cracks can be partially filled with sand prior to application.
- The repair can be tooled to even out the surface.
- Excess material may be cleaned with a damp cloth.

Clean Up

Typically water will satisfactorily clean tools after using **Akona® Commercial Grade Concrete Repair** if the material has begun to harden, warm soapy water may be helpful for cleaning hands and tools.

For Best Results

Wait at least 24 hours before painting. Use latex paints only. Air and surface temperature should be above 40°F (4°C) for proper application. Do not apply if rain threatens or is predicted within 12 hours. Store between 35°F and 100°F (2°C and 38°C).

Warranty:

Seller warrants that its product will conform to and perform in accordance with the product specifications. The foregoing warranty is in lieu of all other



warranties, express or implied, including, but not limited to, those including merchantability and fitness for a particular purpose. Because of the difficulty in ascertaining and measuring damages hereunder, it is agreed that, seller's liability to the buyer at no point for any particular project shall exceed the total purchase price of said product.

WARNING: INJURIOUS TO EYES!

KEEP OUT OF REACH OF CHILDREN!

PRECAUTIONS:

Avoid contact with eyes and skin. If contact with eyes occurs, flood eyes repeatedly with clean water and see a physician immediately. Do not rub eyes. Wash hands thoroughly after handling or before eating with warm, soapy water. Do not take internally. Keep out of reach of children.

