

Product Description

Akona® Vinyl Cement Patch is ideally suited for repairs to damaged concrete steps, sidewalks, driveways, patios, curbs, walls and floors. This product contains unique polymers that give it a higher bond strength than that of conventional concrete. For resurfacing large areas, use Akona® Polymer-Modified Concrete Resurfacer.

When/Where to Use

- Interior & exterior repairs
- Steps
- Sidewalks
- Walls
- Floors
- Patios
- Driveways

Best for skim coating surfaces with only minor imperfections!

Advantages

- Superior Bond
- High Strength / Polymer Modified
- Troweable to Feather Edge
- Just Add Water

Available Sizes:

10lb. Bag and 25lb. Bag



Coverage

1 square foot per pound at 1/8" thick.

Preparation:

Remove all loose or unsound materials. Thoroughly clean surface of dirt, dust, grease or other contaminants before patching, topping, or placing overlays. Smooth troweled or dense concrete surfaces must be etched or roughened to ensure proper bond adhesion. PRE-WET SURFACE JUST PRIOR TO APPLICATION OF PRODUCT.

Mixing

Add approximately 1½ pints of clean, cool water per 10 pounds of powder. Always add powder to liquid to avoid lumps. Mix to a uniform consistency by hand or use a mechanical mixer until a putty like consistency is reached. Avoid high speed mechanical mixing which can entrap air into the mixture.

Application

For best results, do not apply when temperatures drop below 40° F within 48 hours of application. Do not apply in direct sunlight on hot, windy days. Cover surface with wet burlap or towel overnight to retain moisture. Remove covering and allow to air cure. When troweling, be sure to clean the surface of the trowel often with water and use "light touch" when finishing the surface. Do not over trowel. Build up in 1/2" increments to reduce shrinkage and cracking. Additional applications can be made after 24 hours. Akona® Vinyl Cement Patch is not intended for use as resurfacer. Protect the surface from use until patch is completely hard and set. Clean up with soap and warm water as soon as application is completed.

Clean Up

Typically water will satisfactorily clean



tools after using Vinyl Cement Patch. If the material has begun to harden, warm soapy water may be helpful for cleaning hands and tools.

Warranty:

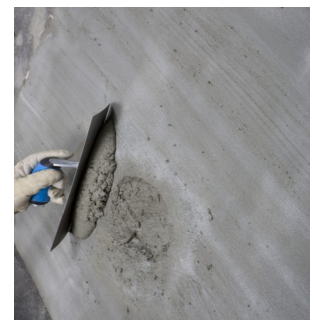
Seller warrants that its product will conform to and perform in accordance with the product specifications. The foregoing warranty is in lieu of all other warranties, express or implied, including, but not limited to, those including merchantability and fitness for a particular purpose. Because of the difficulty in ascertaining and measuring damages hereunder, it is agreed that, seller's liability to the buyer at no point for any particular project shall exceed the total purchase price of said product.

WARNING: INJURIOUS TO EYES!

KEEP OUT OF REACH OF CHILDREN!

PRECAUTIONS:

Avoid contact with eyes and skin. If contact with eyes occurs, flood eyes repeatedly with clean water and see a physician immediately. Do not rub eyes. Wash hands thoroughly after handling or before eating with warm, soapy water. Do not take internally. Keep out of reach of children.



Helpful Items:

